

## How to Apply Color Infrared Symbology to an Image Service

The MD iMAP 3.0 Image Service (Six Inch Resolution) is located at:

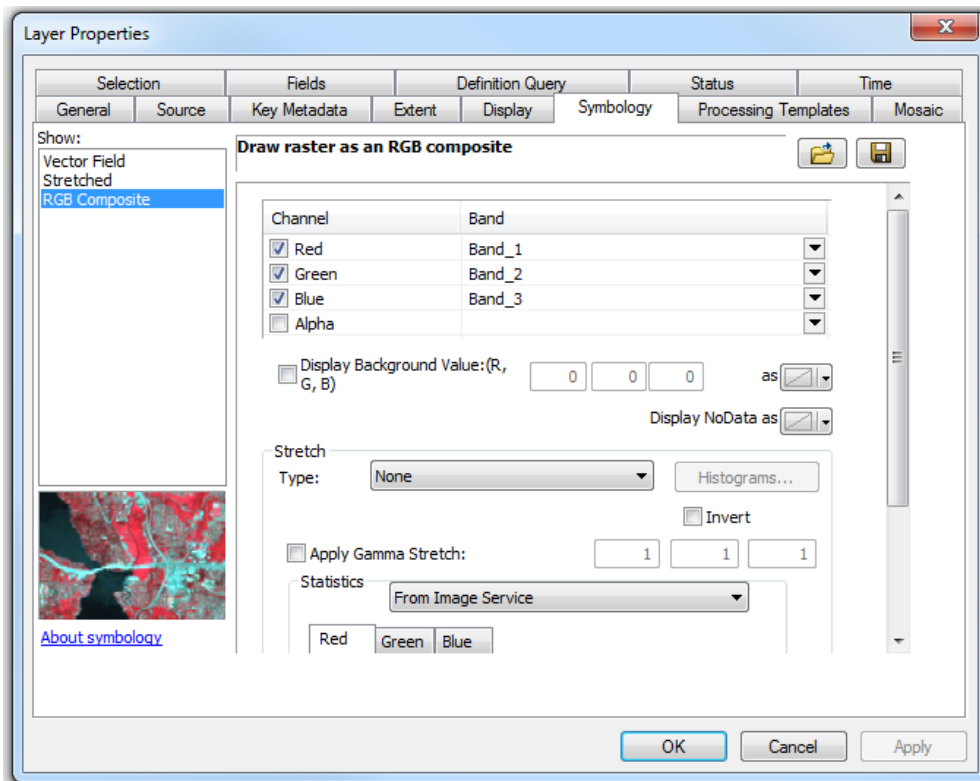
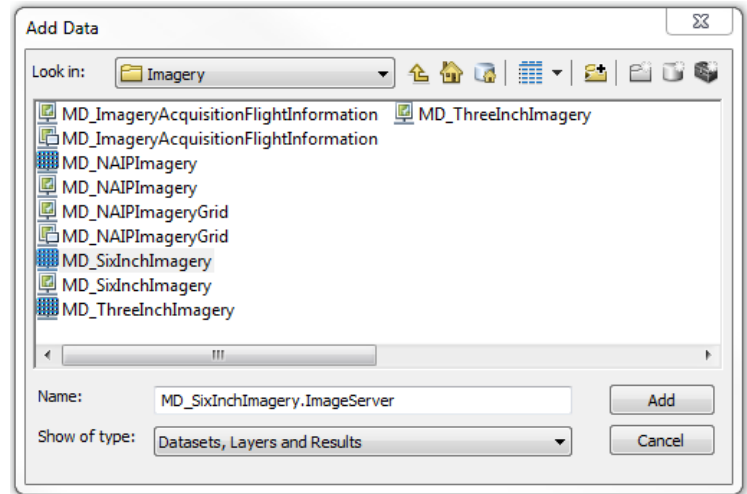
[https://geodata.md.gov/imap/rest/services/Imagery/MD\\_SixInchImagery/ImageServer](https://geodata.md.gov/imap/rest/services/Imagery/MD_SixInchImagery/ImageServer).



1. Open ArcMap
2. Connect to MD iMAP services and add the MD\_SixInchImagery Image Service

*Note: Use the training document “[How to Add MD iMAP 3.0 Web Services in ArcGIS Desktop](#)” for step-by-step instructions on how to connect to MD iMAP services.*

3. In the Table of Contents, Right Click on the layer and Select Properties
4. Select the Symbology Tab



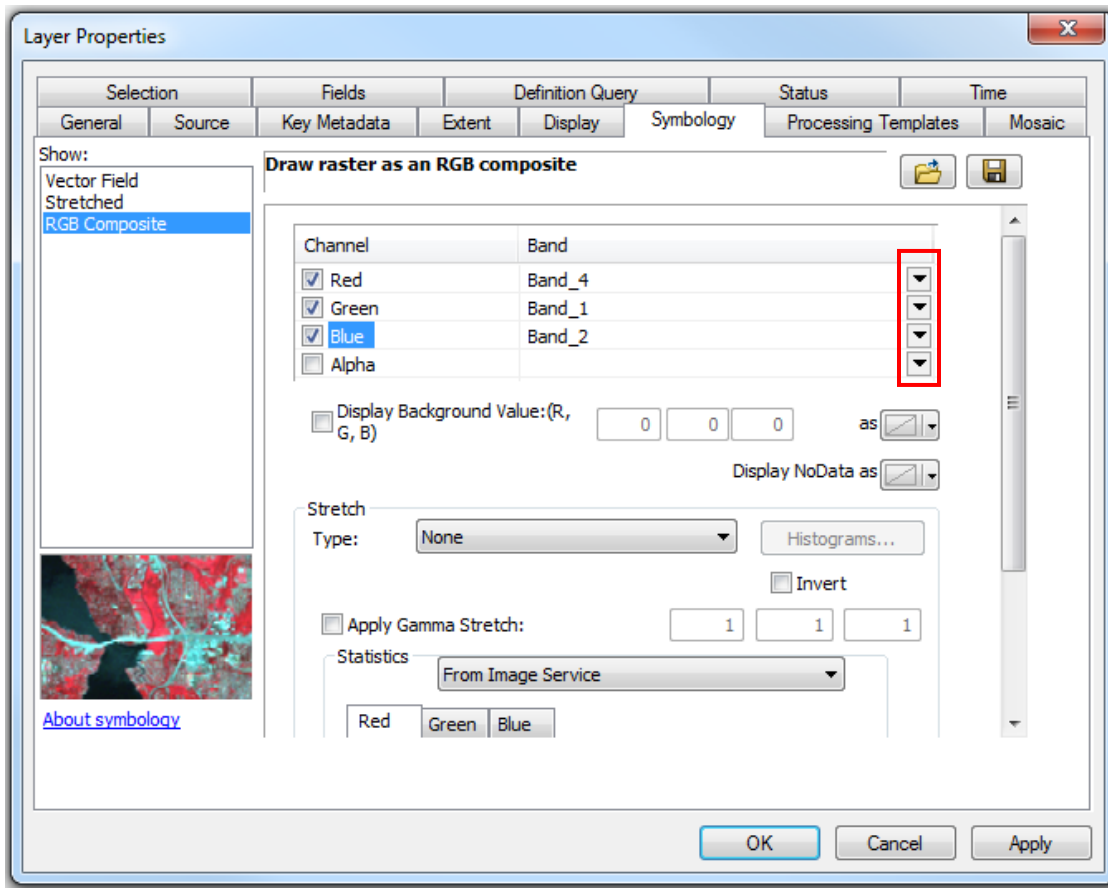
5. Under Show: on the left hand side of the window, Select RGB Composite.

By Default the imagery show in True Color where:

- Red = Band 1
- Green = Band 2
- Blue = Band 3

6. Use the pull downs to the right of the Band Column for each band to reconfigure the Channel/Band combination for Color Infrared

- Red = Band 4
- Green = Band 1
- Blue = Band 2



7. Click Apply

8. Click OK to Apply Color Infrared Settings

*Note: This same process can be applied to the three inch imagery service to acquire the same results.*

# True Color Symbology of Image Service



## Color Infrared Symbolology of Imagery Service

