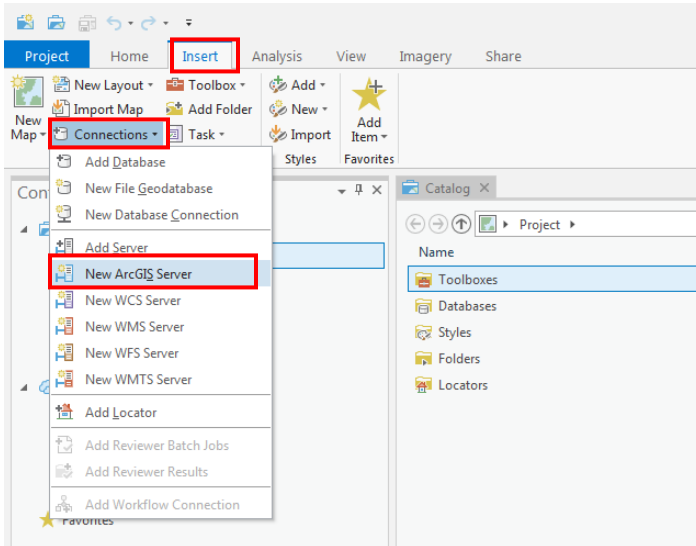


How to Add Web Services in ArcGIS Pro (MD iMAP 3.0)

1. Open ArcGIS Pro.
2. Open an existing project or create a new project.

Connect to ArcGIS Server

3. In ArcGIS Pro, on the ribbon's **Insert** tab, click **Connections** and select **New ArcGIS Server** to create a connection to MD iMAP.

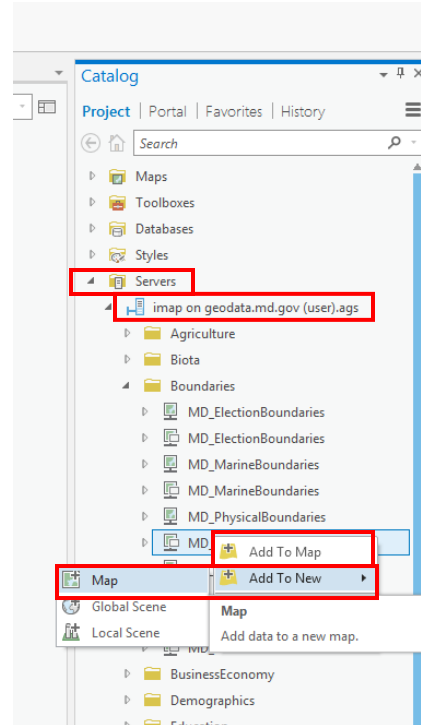


4. In the **Add ArcGIS Server User Connection** dialog box, enter the following URL next to **Server URL**:
<https://geodata.md.gov/imap/services>
You do not need to enter a user name and password
5. Click **OK**.



Add Service to a Map

- Once connected to the server, go to the **Catalog** Pane and double click **Servers** to access the server connection. Double click **imap on geodata.md.gov(user).ags**. This may take a moment to load.
- Navigate to the folder containing the map service of interest.
- Right click on the service of interest and select **either Add to Map OR Add to New → Map**.



Note on services:



Map services: view a GIS data layer and identify map features. Recommended for slower internet connections or data intensive layers.

Feature services: View a GIS data layer, identify map features, interact with the attribute table, and later symbology. If enabled, users can export a local copy of the layer.