

How to Apply Color Infrared Symbology to an Image Service



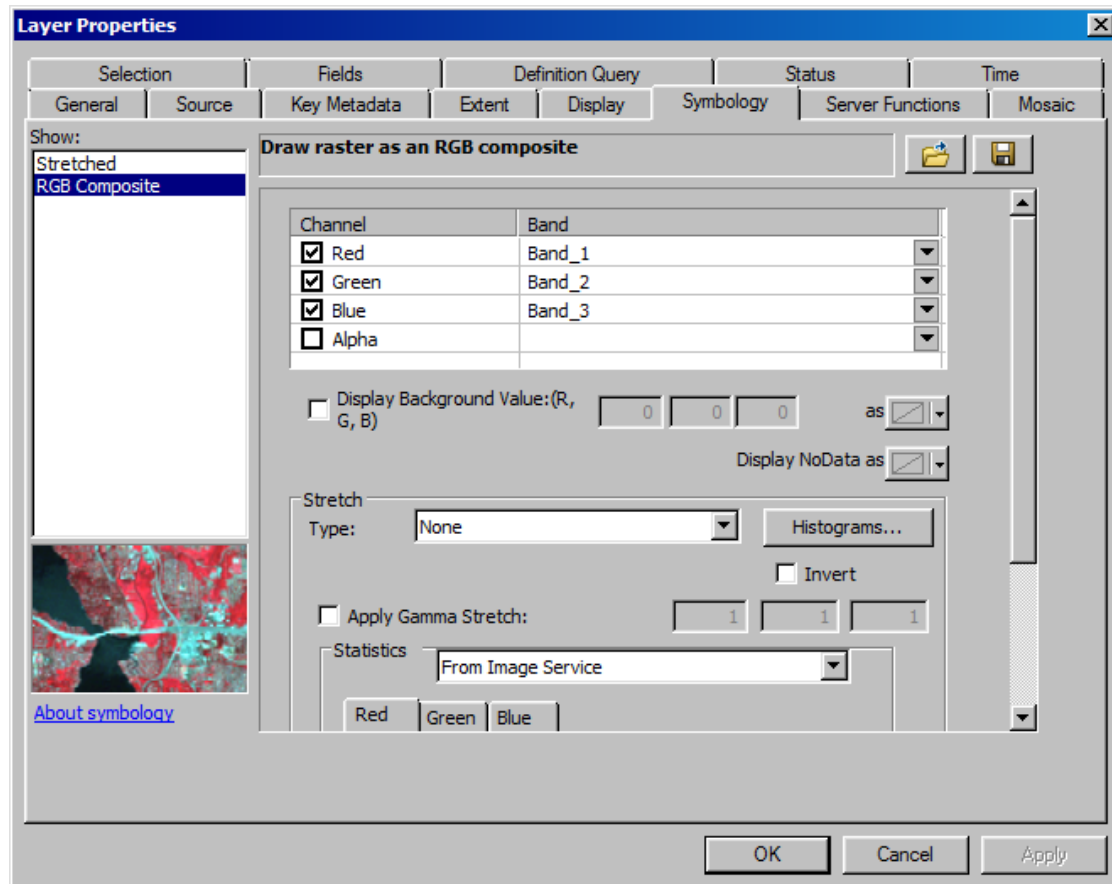
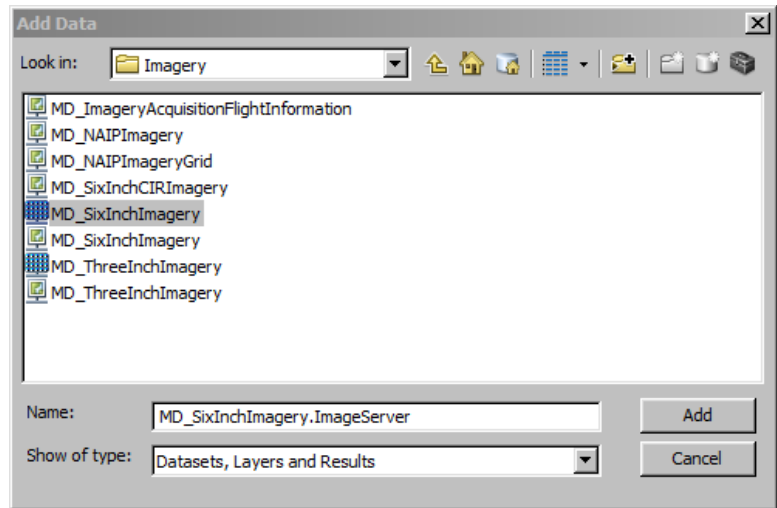
The MD iMAP 2.0 Image Service (Six Inch Resolution) is located at:

http://geodata.md.gov/imap/rest/services/Imagery/MD_SixInchImagery/ImageServer.

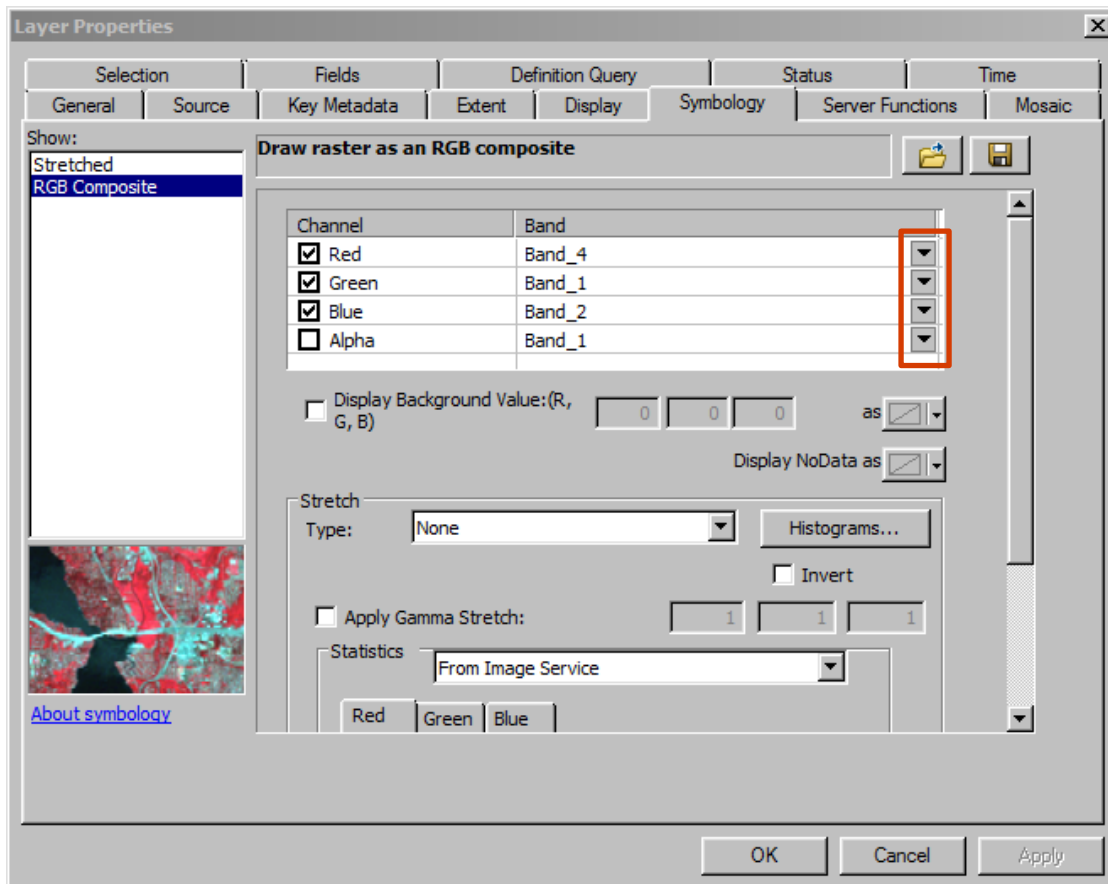
1. Open ArcMap
2. Connect to MD iMAP services and add the MD_SixInchImagery Image Service

Note: Use the training document "[How To Add MD iMAP 2.0 Web Services in ArcGIS Desktop](#)" for step-by-step instructions on how to connect to MD iMAP services.

3. In the Table of Contents, Right Click on the layer and Select Properties
4. Select the Symbology Tab



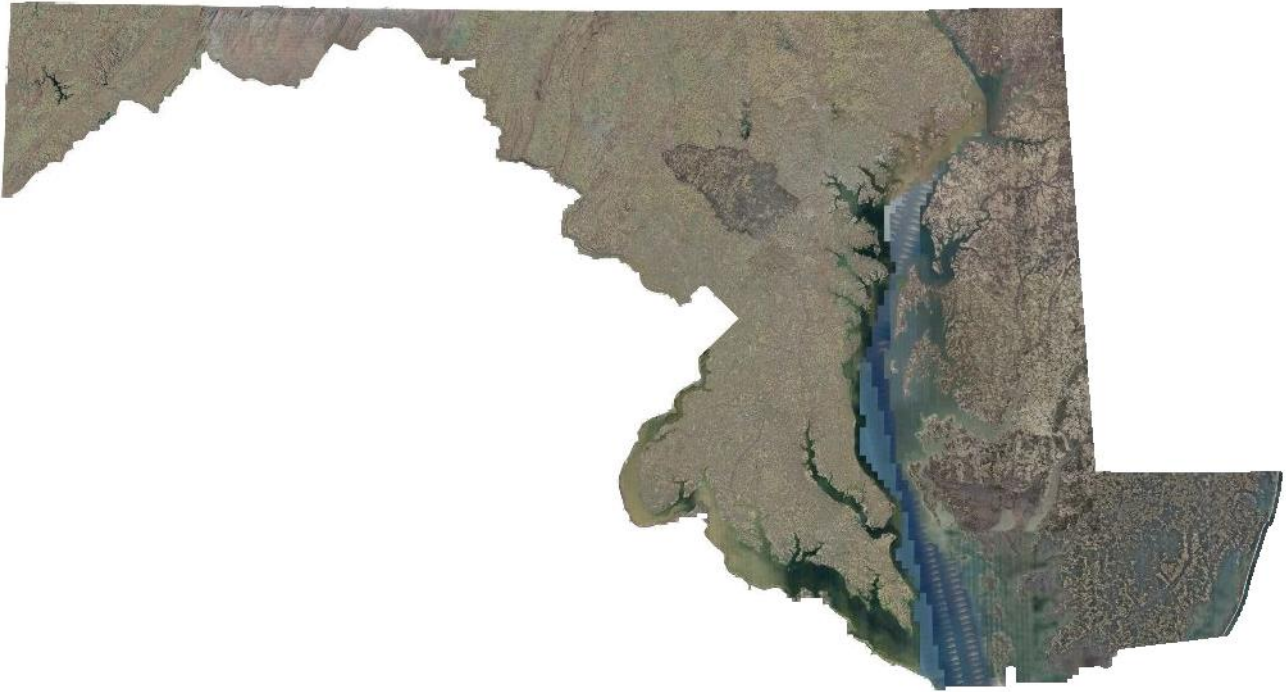
5. Under Show: on the left hand side of the window, Select RGB Composite
By Default the imagery show in True Color where:
 - Red = Band 1
 - Green = Band 2
 - Blue = Band 3
6. Use the pull downs to the right of the Band Column for each band to reconfigure the Channel/Band combination for Color Infrared
 - Red = Band 4
 - Green = Band 1
 - Blue = Band 2



7. Click Apply
8. Click OK to Apply Color Infrared Settings

Note: This same process can be applied to the three inch imagery image service to acquire the same results.

True Color Symbology of Image Service



Color Infrared Symbolology of Image Service

